

Studio A Apartments in South Hall differ slightly depending on location in the building. This drawing is not to scale and represents only one of the floor plans of a Studio A Apartment.

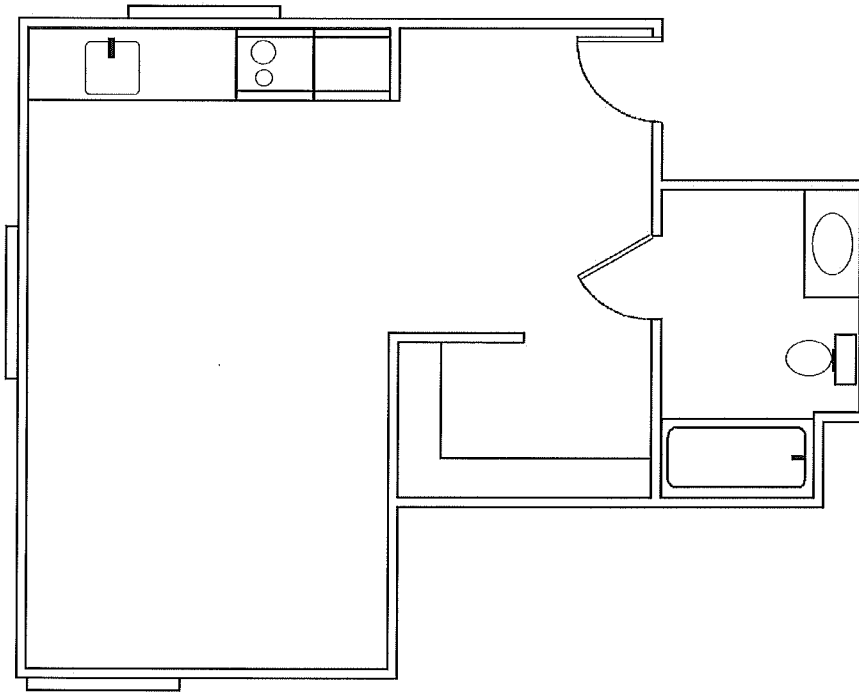
All Studio A Apartments come with an extra long twin bed, love seat, bookcase, dresser, small table with two chairs, and a desk.

The kitchen has a fridge and a smaller sized stove. Microwaves are permitted but not provided.

South Hall Studio A Apartments are between 296 and 299 square feet in size.

There are 8 Type A Studios throughout the building.

South Hall Studio A Apartment



Studio B Apartments in South Hall differ slightly depending on location in the building. This drawing is not to scale and represents only one of the floor plans of a Studio B Apartment.

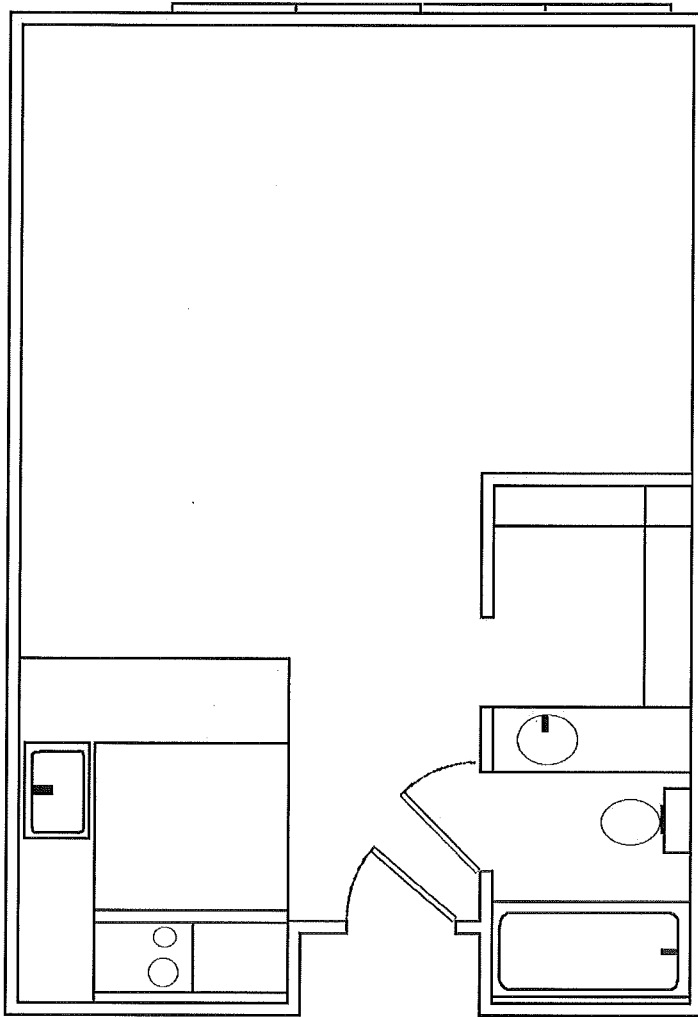
All Studio C Apartments come with an extra long twin bed, love seat, bookcase, dresser, small table with two chairs, and a desk.

The kitchen has a fridge and a smaller sized stove. Microwaves are permitted but not provided.

South Hall Studio B Apartments are between 328 and 355 square feet in size.

There are 4 Type B Studios throughout the building.

South Hall Studio B Apartment



Studio C Apartments in South Hall differ slightly depending on location in the building. This drawing is not to scale and represents only one of the floor plans of a Studio C Apartment.

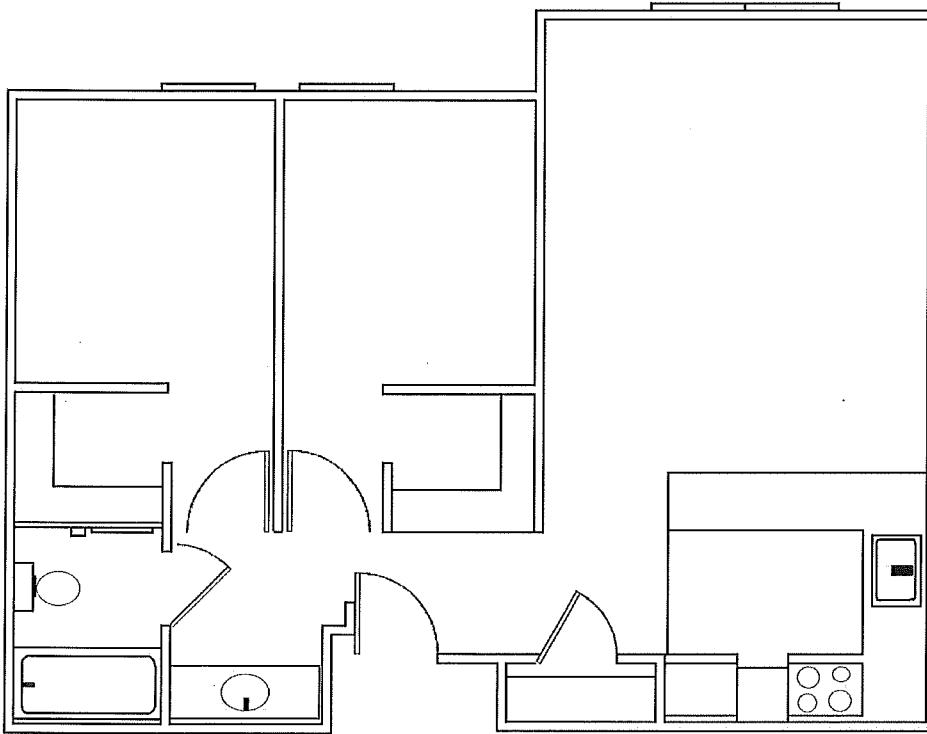
All Studio C Apartments come with an extra long twin bed, love seat, bookcase, dresser, small table with two chairs, and a desk.

The kitchen has a fridge and a smaller sized stove. Microwaves are permitted but not provided.

South Hall Studio C Apartments are 452 square feet in size.

There are 7 Type C Studios throughout the building.

South Hall Studio C Apartment



South Hall
2 Bedroom Apartment

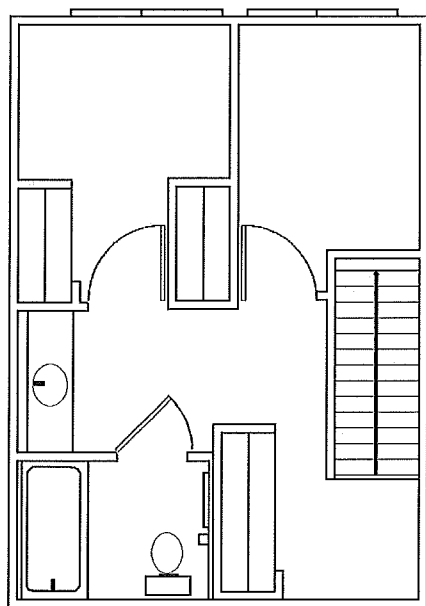
2-Bedroom Apartments in South Hall differ slightly depending on location in the building. This drawing is not to scale and represents only one of the typical floor plans of a 2-Bedroom Apartment.

All 2-Bedroom Apartments come with a love seat, table with two chairs and bookcase in the common area. Bedrooms have an extra long twin bed, night stand, dresser, and desk with chair.

The kitchen has a fridge and full size stove. Microwaves are permitted but not provided.

South Hall 2-Bedroom Apartments are between 701 and 926 square feet in size.

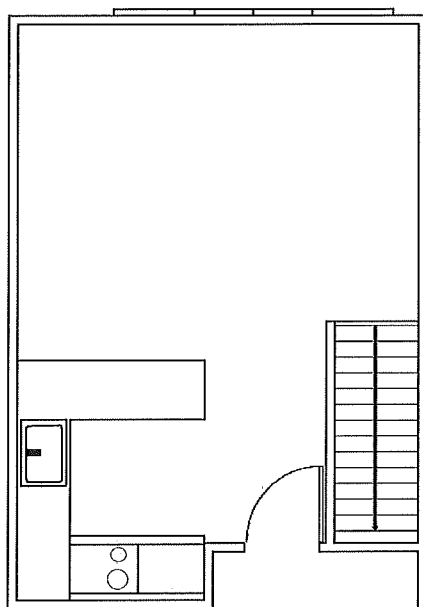
There are 26 throughout the building.



Upstairs

2-Bedroom Townhouses in South Hall differ slightly depending on location in the building. This drawing is not to scale and represents only one of the typical floor plans of a 2-Bedroom Townhouse.

All 2-Bedroom Townhouses come with a love seat, table with two chairs and bookcase in the common area. Bedrooms have an extra long twin bed, night stand, dresser, and desk with chair.



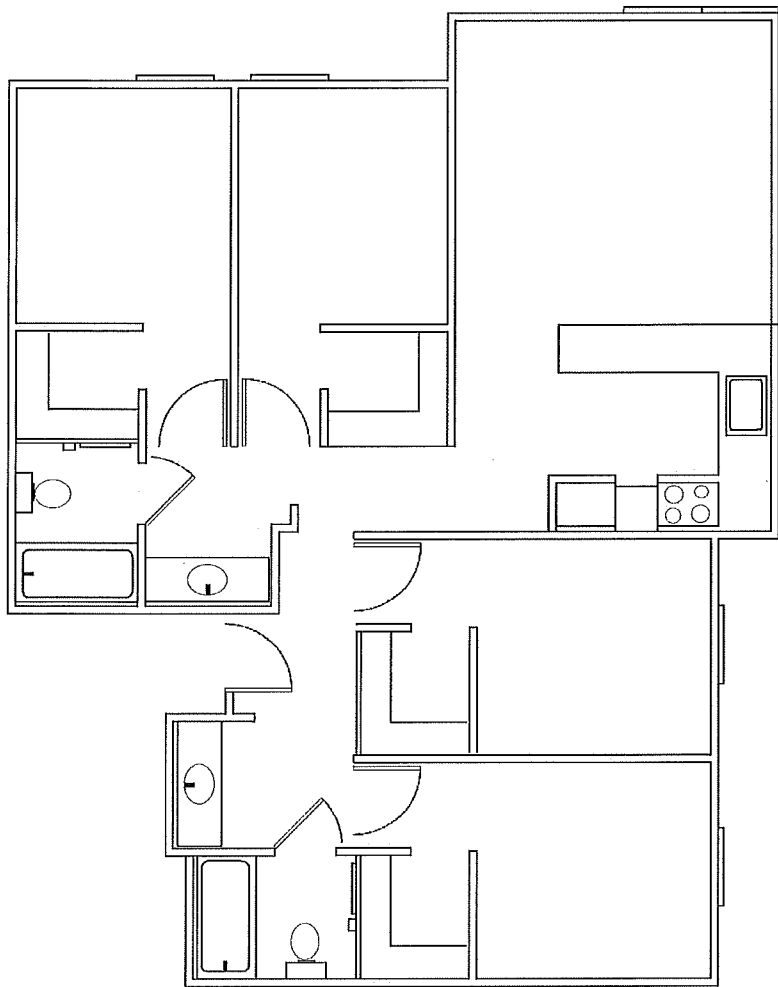
Downstairs

The kitchen has a fridge and full size stove. Microwaves are permitted but not provided.

South Hall 2-Bedroom Townhouses are between 825.5 and 924 square feet in size.

There are 18 located on the 3rd floor.

South Hall 2 Bedroom Townhouse



4-Bedroom Apartments in South Hall differ slightly depending on location in the building. This drawing is not to scale and represents one of the typical floor plans of a 4-Bedroom Apartment.

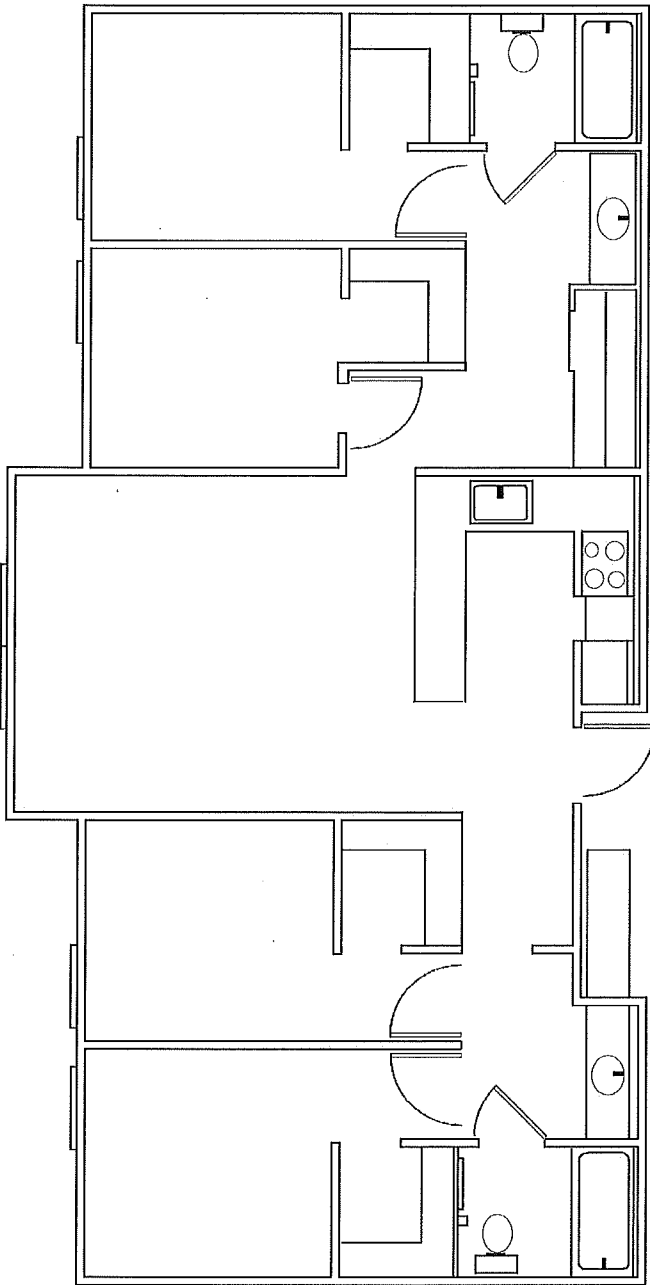
All 4-Bedroom Apartments come with a full size sofa, table with four chairs and bookcase in the common area. Bedrooms have an extra long twin bed, night stand, dresser, and desk with chair.

The kitchen has a fridge and full size stove. Microwaves are permitted but not provided.

South Hall 4-Bedroom Apartments are between 1019 and 1280 square feet in size.

There are 27 4-Bedroom Apartments throughout the building.

South Hall 4 Bedroom Corner Unit



**South Hall
4 Bedroom Hallway Unit**

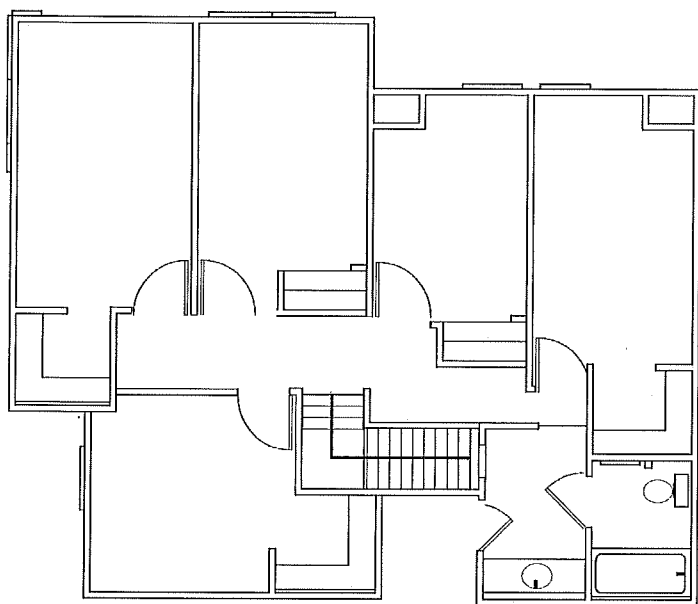
4-Bedroom Apartments in South Hall differ slightly depending on location in the building. This drawing is not to scale and represents one of the typical floor plans of a 4-Bedroom Apartment.

All 4-Bedroom Apartments come with a full size sofa, table with four chairs and bookcase in the common area. Bedrooms have an extra long twin bed, night stand, dresser, and desk with chair.

The kitchen has a fridge and full size stove. Microwaves are permitted but not provided.

South Hall 4-Bedroom apartments are between 1019 and 1280 square feet in size.

There are 27 4-Bedroom Apartments throughout the building.



Upstairs

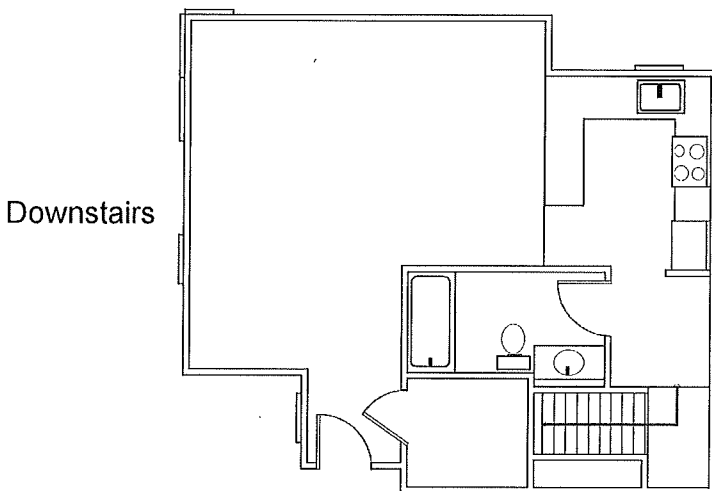
This drawing is not to scale and is to simply represent the typical floor plan of the 5-Bedroom Apartment.

The 5-Bedroom Apartment comes with a full size sofa, table with five chairs and a bookcase in the common area. Bedrooms have an extra long twin bed, night stand, dresser, and desk with chair.

The kitchen has a fridge and full size stove. Microwaves are permitted but not provided.

The South Hall 5-Bedroom Apartment is 1,577 square feet in size.

There is only 1 located on the 3rd floor.



Downstairs

South Hall 5 Bedroom Apartment